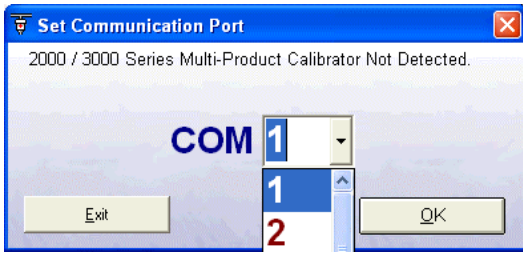


### Selecting a COM Port



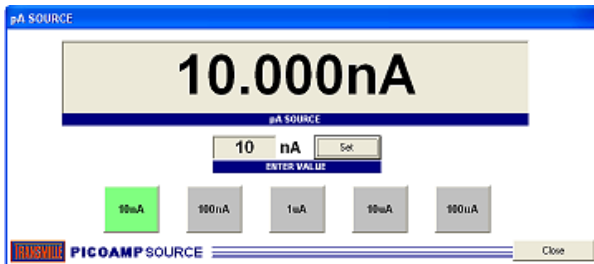
On starting the virtual front panel for the first time, a COM port selection screen will be displayed. Click on the COM port that is connected to your 3000 Series calibrator to continue.



If you are using a laptop to connect to the calibrator, the COM port will usually be COM 1. A desktop computer will usually be COM 2

### Operation of the Virtual Front Panel

Once the correct COM port is selected, the calibrator will be detected, and the main screen displayed :



Connect Picoamp source and select range required by using the range selection buttons



The selected range will be highlighted in green

Enter a value in the box marked 'enter value', then click SET to output value.



If the value is outside the limits of the range selected a message will be displayed similar to the following :



Use the CLOSE button to exit the virtual front panel program